

KY 86 SCOPING STUDY
BRECKINRIDGE AND HARDIN COUNTIES
KYTC ITEM NO. 4-8901.00

APPENDIX E – SOCIOECONOMIC STUDY

**KY 86 from MP 15.957 (Breckinridge
Co.) to MP 16.145 (Hardin Co.)
Breckinridge Co/Hardin Co Item No. 4-8901.00**

**Socioeconomic Study and
Community Impact Report**



January 2017

Prepared By:
Lincoln Trail Area Development District
613 College Street Rd.
P.O. Box 604
Elizabethtown, KY 42702
(270) 769-2393



Table of Contents

1.0 Introduction.....	3
2.0 What is Environmental Justice?.....	3
2.1 Definitions.....	4
3.0 Methodology	5
4.0 Census Data Analysis	5
5.0 Study Findings / Overview	6
6.0 Study Findings / Population by Persons of Minority Origin	9
7.0 Study Findings / Population by Persons Below Poverty Level	8
8.0 Study Findings / Population by Persons 65 and Over	8
9.0 Study Findings / Population by Disability Age 16 to 64.....	9
10.0 Study Findings / Population Sex.....	10
11.0 Study Findings / Population by English Proficiency.....	11
12.0 Conclusion	12
13.0 Study Area Maps.....	13

Appendices

Appendix A: Planning Study Contact List.....	A-1
Appendix B: Methodology for Assessing Potential Environmental Justice Concerns for KYTC Planning Studies.....	B-1
Appendix C: Census Data Tables	C-1

1.0 Introduction

The following document is an assessment of the community demographics and characteristics related to the defined project study area of KY 86 from US 60 (Mile Point 15.957) in Breckinridge County to US 62 (Mile Point 16.145) in Hardin County. This project is listed as Item Number 4-8901.00 in the Kentucky Six-Year Highway Plan FY 2016-2022 and is currently in the Planning phase.

The resources used to compile the data contained herein are the U.S. Census Bureau, Kentucky State Data Center, local elected officials, community leaders, and field observations of the study area. The information and results are intended to assist the Kentucky Transportation Cabinet in making informed and prudent decisions in the study area, particularly as it pertains to the requirements of Executive Order 12898¹, to ensure equal environmental protection to all groups potentially impacted by both short and long-term improvement strategies for this section of KY 86.

This report includes data tables comparing the populations of the census divisions directly in and around the study area at the county, state, and national levels. Statistics are provided for minority, elderly, low-income, disabled, and limited English proficiency populations for census tracts and block groups, except where not available. For ease of analysis, maps are included that highlight areas of interest.

Of note, the data presented in this document is intended to highlight areas of concern that will require additional analysis should the project be advanced to future phases.

2.0 What is Environmental Justice?

The U.S. EPA Office of Environmental Justice (EJ) defines EJ as:

“The fair treatment and meaningful involvement of all people regardless of race, color, national origin, or income with respect to the development, implementation and enforcement of environmental laws, regulations and policies. Fair treatment means that no group of people, including racial, ethnic, or socio-economic group should bear a disproportionate share of the negative environmental consequences resulting from industrial, municipal, and commercial operations or the execution of federal, state, local and tribal programs and policies.”

A disproportionately high and adverse effect on a minority or low-income population means an adverse effect that:

¹ Executive Order 12898 signed on February 11, 1994 states “...each Federal agency shall make achieving environmental justice part of its mission by identifying and addressing, as appropriate, disproportionately high and adverse human health or environmental effects of its programs, policies, and activities on minority populations and low-income populations...”

1. is predominately borne by a minority population and/or low-income population, or
2. will be suffered by the minority population and/or low-income population and is appreciably more severe or greater in magnitude than the adverse effect that will be suffered by the non-minority population and/or non-low-income population.

2.1 Definitions

USDOT Order 5610.2 on EJ, issued in the April 15, 1997 Federal Register defines what constitutes low-income and minority population.

- **Low-Income** is defined as a person whose median household income is at or below the U.S. Department of Health and Human Services poverty guidelines.
- **Minority** is defined as a person who is: (1) Black (a person having origins in any black racial groups of Africa); (2) Hispanic (a person of Mexican, Puerto Rican, Cuban, Central or South American, or other Spanish culture or origin, regardless of race); (3) Asian American (a person having origins in any of the original peoples of the Far East, Southeast Asia, the Indian subcontinent, or the Pacific Islands); or (4) American Indian and Alaskan Native (a person having origins in any of the original people of North America and who maintains cultural identification through tribal affiliation or community recognition).
- **Low-Income Population** is defined as any readily identifiable group of low-income persons who live in geographic proximity, and if circumstances warrant geographically dispersed/transient persons who will be similarly affected by a proposed DOT program, policy or activity.
- **Minority Population** is defined as any readily identifiable group of minority persons who live in geographic proximity, and if circumstances warrant, geographically dispersed/transient persons who will be similarly affected by a proposed DOT program, policy or activity.
- **Limited English Proficiency (LEP)** is defined as individuals who do not speak English as their primary language and who have a limited ability to read, speak, write, or understand English can be limited English proficient.
- **Persons with Disabilities** is defined as a person who has a physical or mental impairment that substantially limits on or more major life activities.
- **Elderly** is defined as a person 65 years of age or older, also commonly referred to as seniors or aging populations.

EO12898 and USDOT Order 5610.2 do not address consideration of the elderly population. However, the U.S. DOT encourages the study of these populations in EJ discussions and in accordance with EJ, Title VI of the Civil Rights Act of 1964 and the Kentucky Transportation Cabinet's advocacy of inclusive public involvement and equal treatment of all persons this study includes statistics for persons age 65 and over that are within the study and comparison areas.

3.0 Methodology

For this study, data was collected by using the method outlined by the Kentucky Transportation Cabinet document, “Methodology for Assessing Potential Environmental Justice Concerns for KYTC Planning Studies.” (See Appendix B.) If applicable under the National Environmental Policy Act (NEPA), a more detailed analysis will be required when assessing the potential for adverse and disproportionate impacts to low-income and minority populations.

The primary sources of data used in the compilation of this report were the U.S. Census Bureau’s 2010 Census, the U.S. Census Bureau’s 2009-2013 ACS, Kentucky State Data Center, local elected officials, community leaders, and field observations. Statistics were compiled to present a detailed analysis of the community conditions for the project study area.

4.0 Census Data Analysis

The U.S. Census Bureau defines geographical units as:

- **Census Tract (CT)** – A small, relatively, permanent statistical subdivision of a county or statistically equivalent entity delineated for data presentation purposes by a local group of census data users or the geographic staff of a regional census center in accordance with Census Bureau guidelines. CTs generally contain between 1,000 and 8,000 people. CT boundaries are delineated with the intention of being stable over many decades, so they generally follow relatively permanent visible features. They may also follow governmental unit boundaries and other invisible features in some instances; the boundary of a state or county is always a census tract boundary.
- **Block Group (BG)** – A statistical subdivision of a CT. A BG consists of all tabulation blocks whose numbers begin with the same digit in a CT. BGs generally contain between 300 and 3,000 people, with an optimum size of 1,500 people.
- **Census Block (CB)** – An area bounded on all sides by visible and/or invisible features shown on a map prepared by the Census Bureau. A CB is the smallest geographic entity for which the Census Bureau tabulates decennial census data.

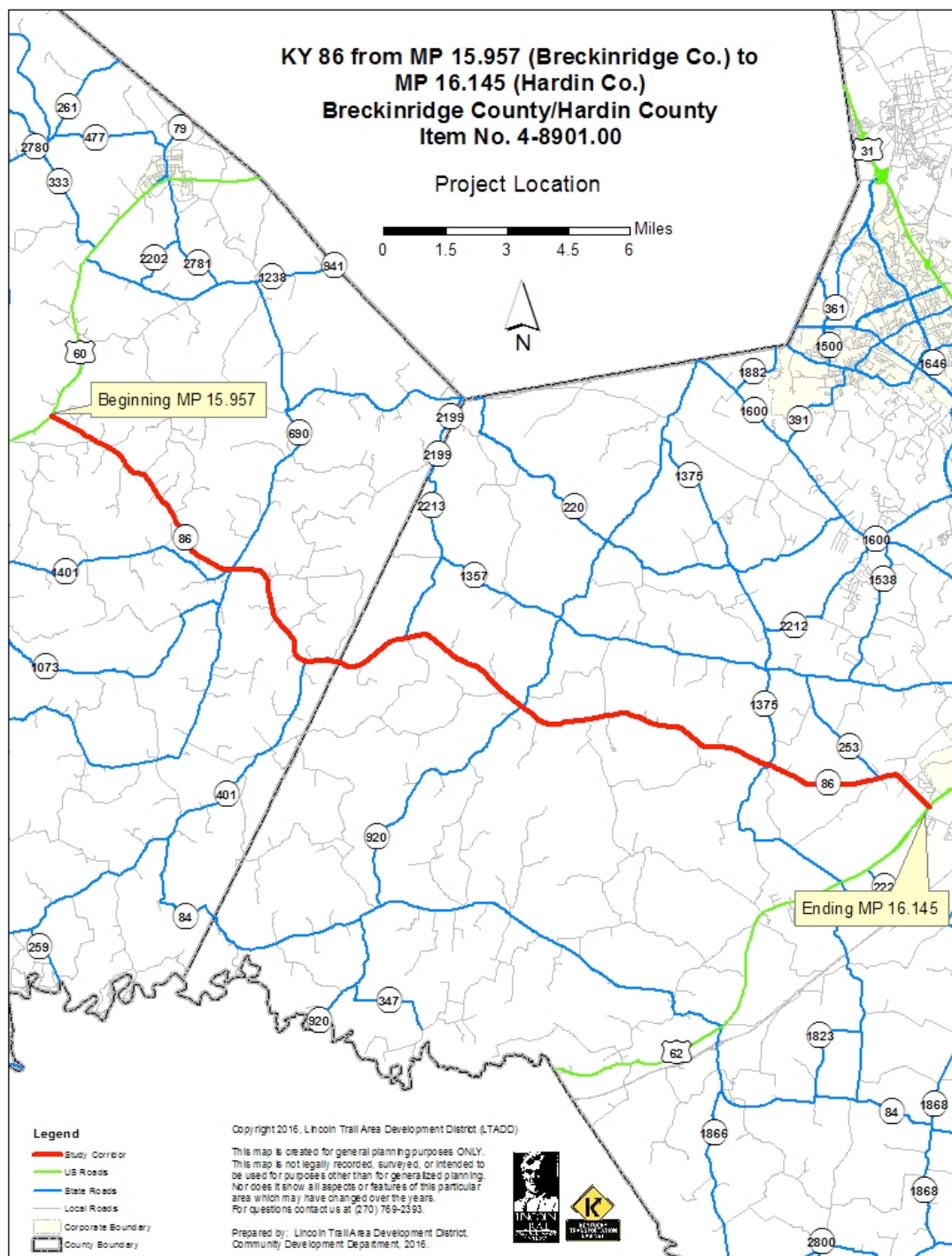
The census data tables include percentages for minority, elderly, and low-income populations in the United States, Kentucky, Breckinridge County, Hardin County, Census Tracts and Block Groups located in and around the study area, except where not available. This data was separated into similar geographical census units to obtain accurate measures of demographic data.

5.0 Study Findings / Overview

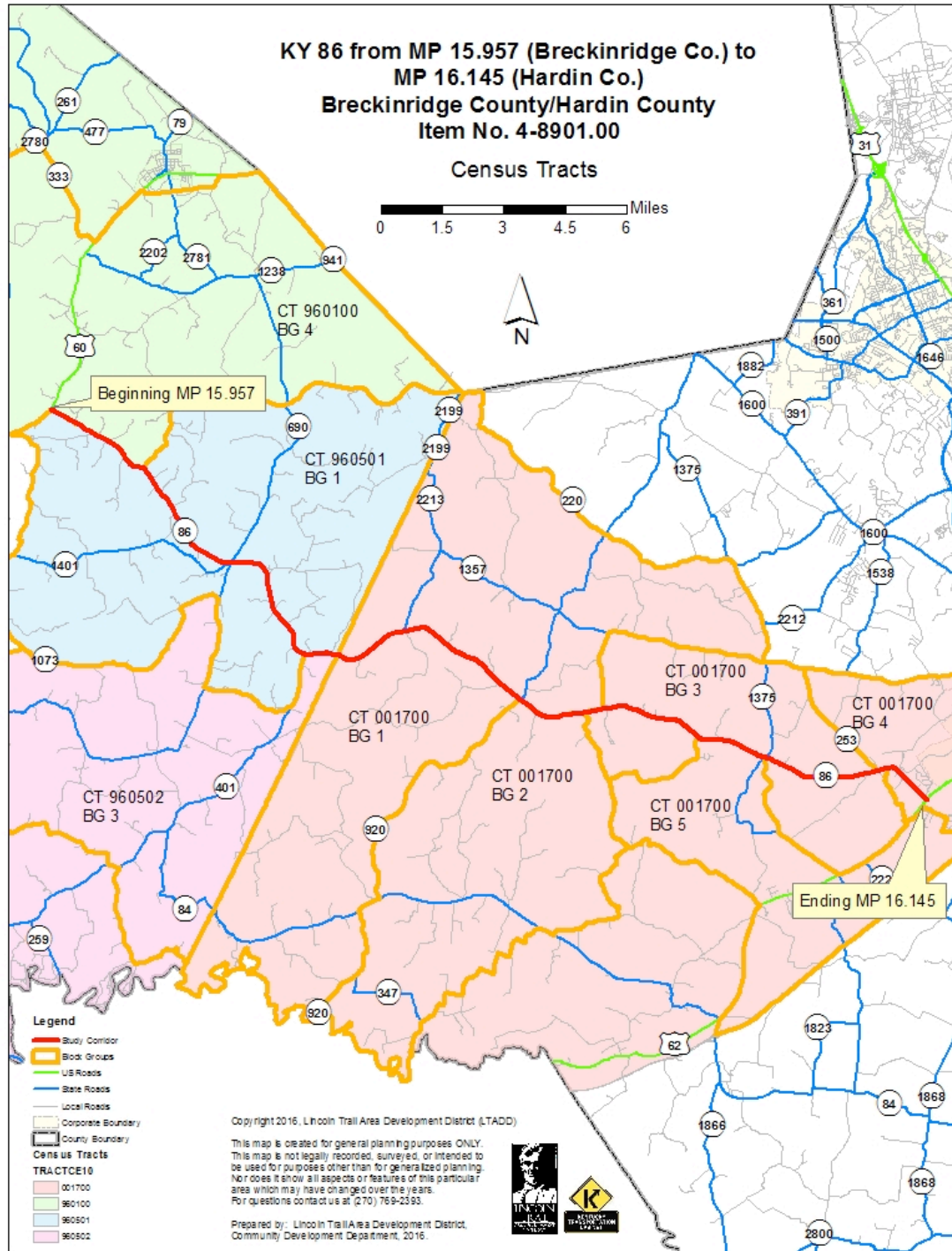
This Socioeconomic Study and Community Impact Report is to be used as a component of a programming study currently being conducted by the Kentucky Transportation Cabinet Division of Planning for the identification of short and long-term improvement strategies for the defined section of KY 86. This study is intended to help define the location and purpose of the project and meet federal requirements regarding consideration of environmental issues as defined in the National Environmental Policy Act (NEPA).

According to the 2010 Census, there are four (4) Census Tracts and eight (8) Block Groups that encompass the population of the defined study area. These are listed below. (See Maps 5.1 for geographic location; 5.2 for Census Tract Boundaries; and 5.3 for Block Group Boundaries)

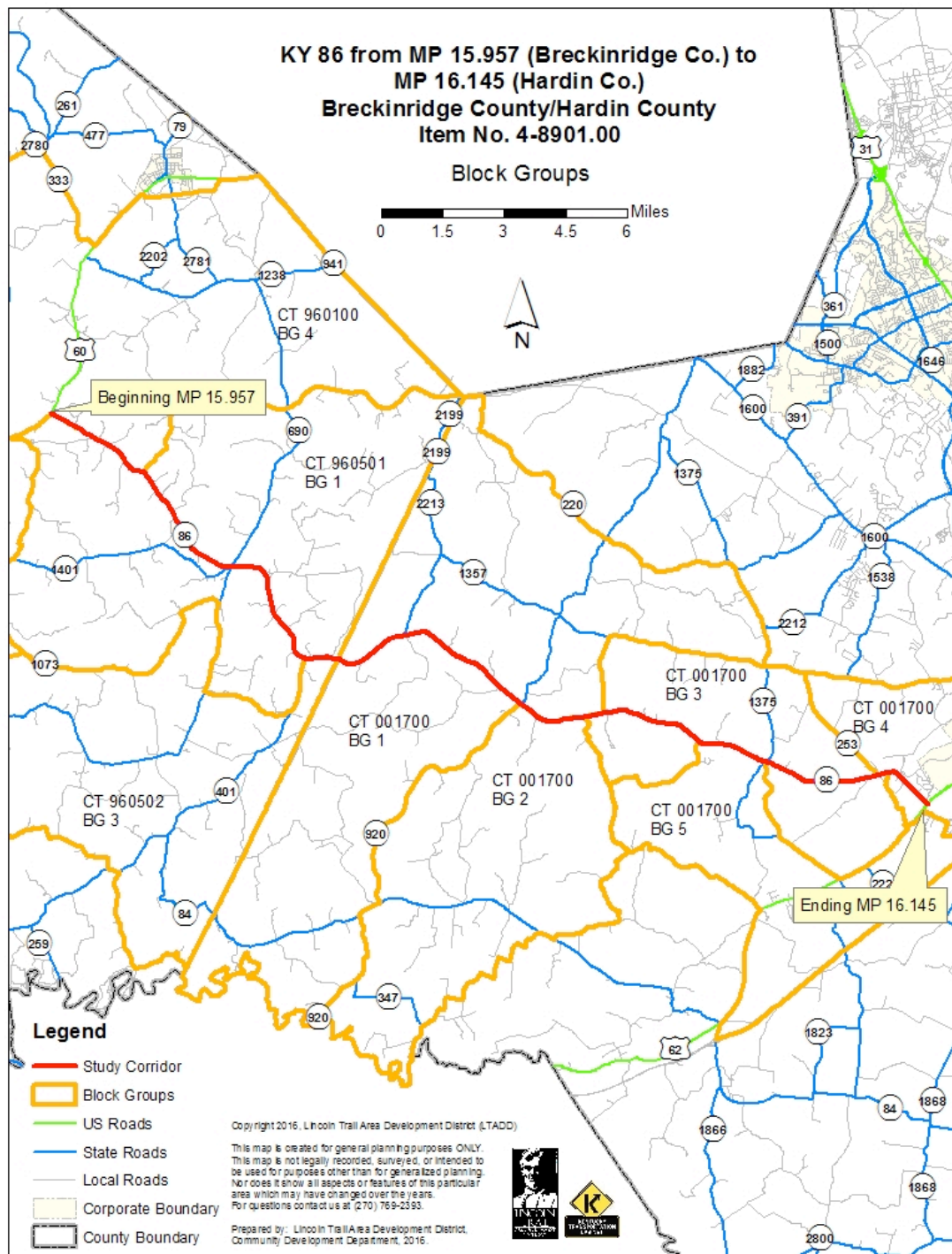
Breckinridge County Total Population	20,076
Hardin County Total Population	107,565
Study Area Total Populations	11,912
Census Tract 960100 (Breckinridge)	4,855
Block Group 4	2,300
Census Tract 960501 (Breckinridge)	1,940
Block Group 1	1,574
Census Tract 960502 (Breckinridge)	3,497
Block Group 3	928
Census Tract 001700 (Hardin)	8,881
Block Group 1	1,892
Block Group 2	1,056
Block Group 3	933
Block Group 4	2,031
Block Group 5	1,198



Map 5.1 – Project Location



Map 5.2 – Census Tracts



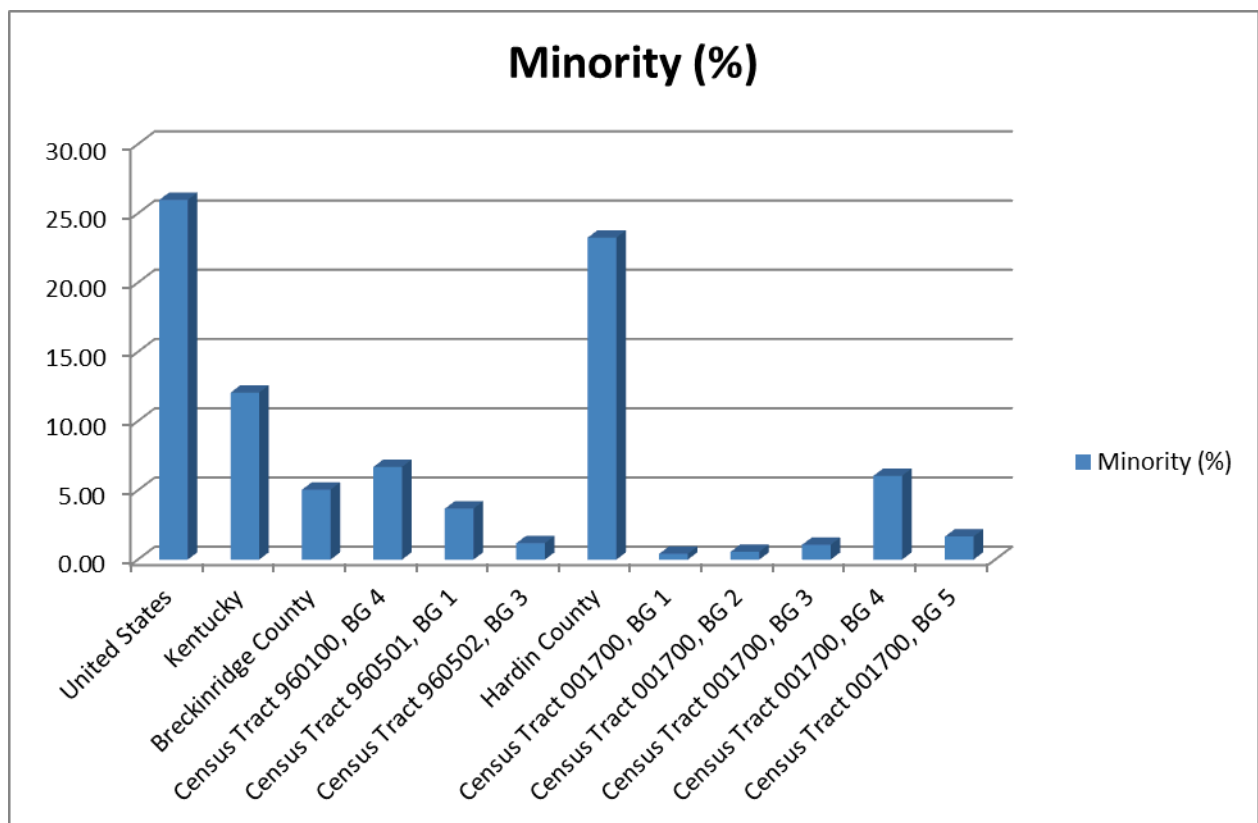
Map 5.3 – Block Groups

6.0 Study Findings / Population by Persons of Minority Origin

As described in the census data, the “White Alone” population percentage for the state of Kentucky, Breckinridge County and Hardin County is 87.93%, 95.31% and 76.36%,

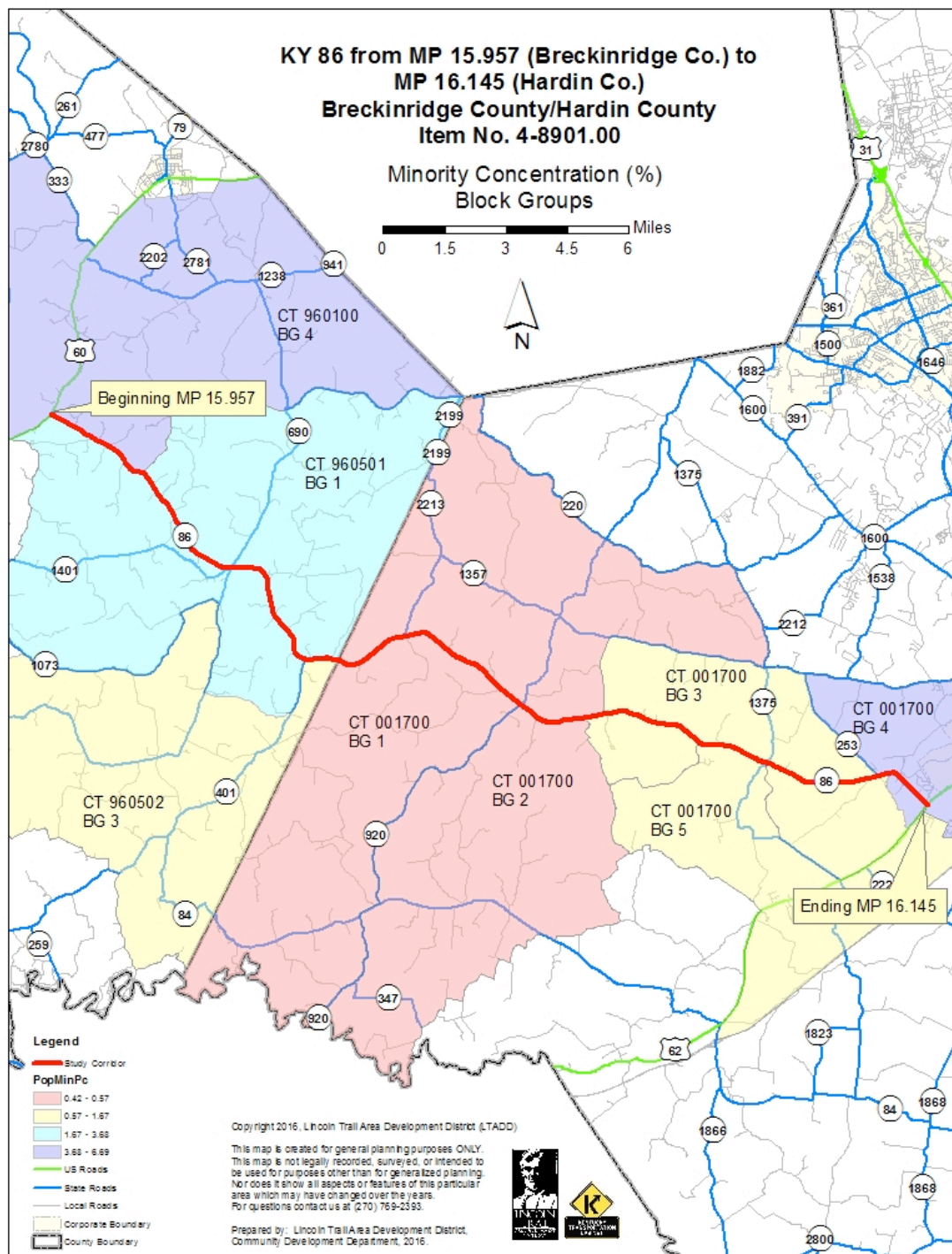
respectively. Kentucky and Breckinridge County are higher than the national percentage of 74.02%, whereas Hardin County is comparable to the national average. The total minority population percentage for the state has been calculated and found to be 12.07%. The total minority percentage for Breckinridge County is below this value at 5.06% and above the state average at 23.26% for Hardin County.

An analysis of block groups in the area reveals that none of the block groups in the study area have a concentration of minority populations that are higher than the national (25.98%) or state (12.07%) average. CT 960100 BG 4 in Breckinridge County has a higher concentration of minorities than Breckinridge County (6.70% for the block group and 5.06% for Breckinridge), but that is the only block group that is higher than the county percentage.



In accordance with the USDOT definition of *Minority*, all races were included in the minority concentration analysis. It is worth noting, though, that of the total minority population in all block groups in the Hardin County, Black or African American Alone accounted for the highest minority percentage across the board where 141 of the total 167 minorities fell (84.43%). In Breckinridge County, Two or More Races account for the highest concentration of minorities where 165 of the total 223 minorities define themselves (73.99%).

Maps 6.1 below displays the minority concentrations geographically

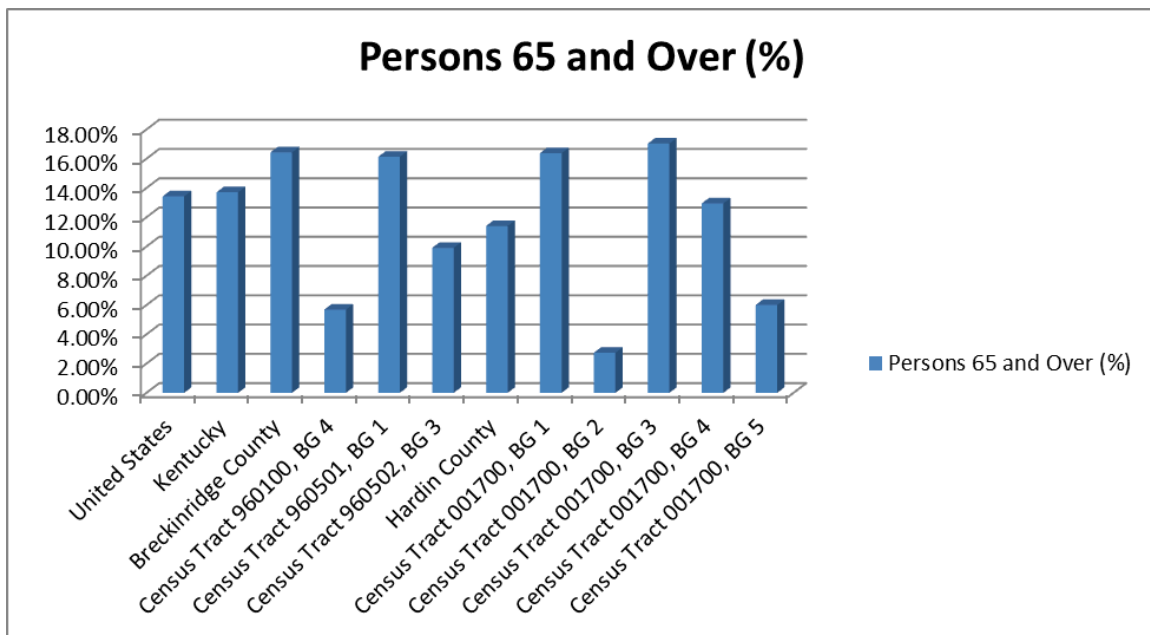


7.0 Study Findings / Population by Persons 65 and Over

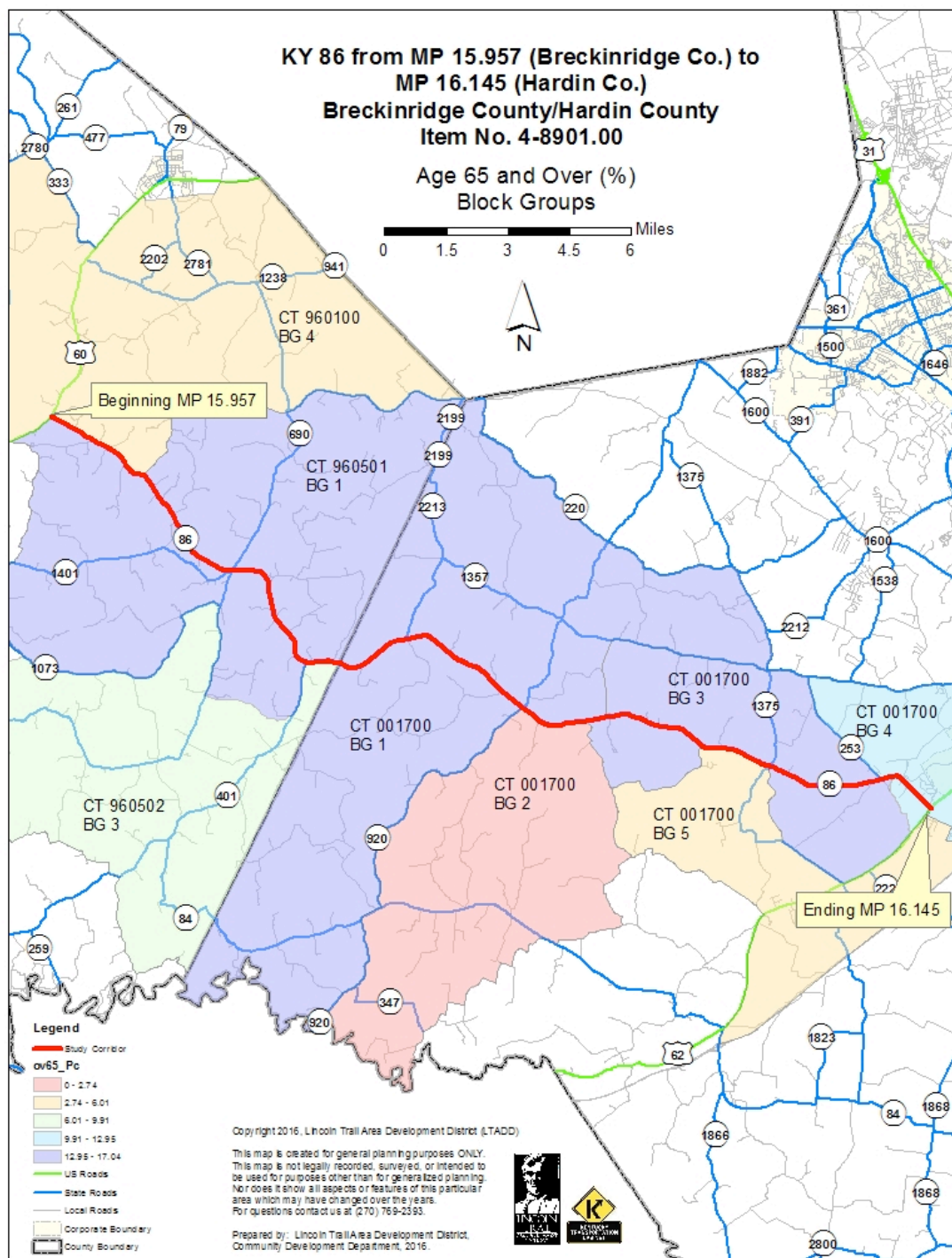
As described in the census data, the population percentage of Persons 65 and Over are very consistent at the national and state levels – 13.43% and 13.71%, respectively. The Hardin County level is slightly below the national and state average at 11.41% whereas

the Breckinridge County level is considerably higher than the national and state average at 16.44%.

When comparing block groups directly impacted by the study scope, the different block groups of Hardin and Breckinridge County vary from group to group. The three block groups in Breckinridge County vary from 5.70% to 16.14%. The five block groups in Hardin County vary from 2.75% to 17.04%.



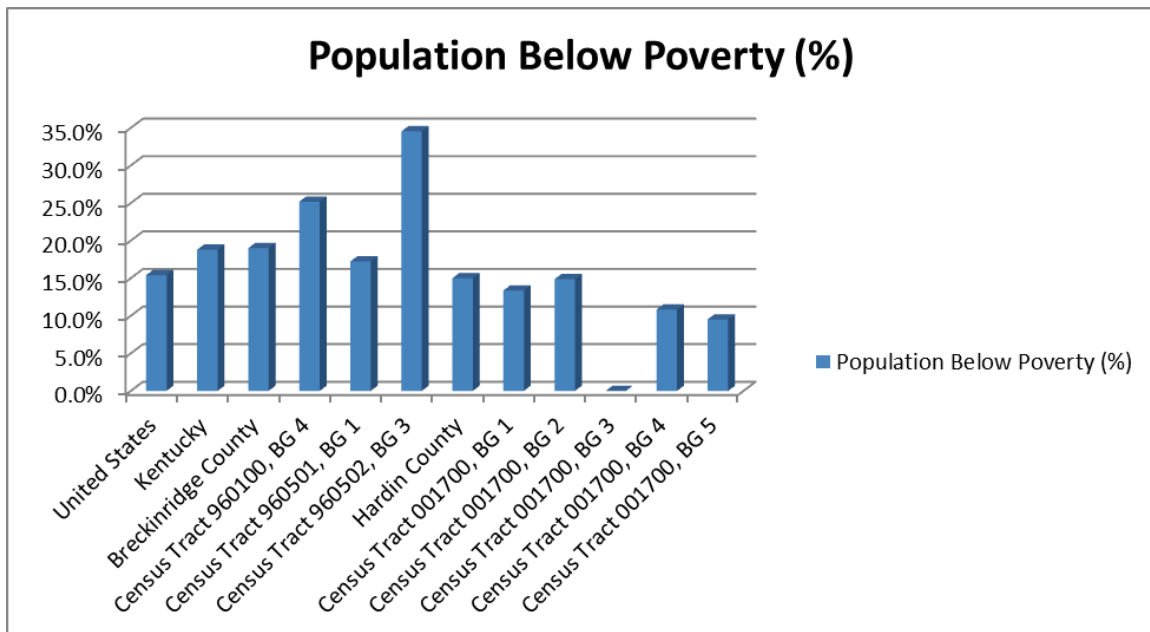
Maps 7.1 below displays the 65 and over concentrations geographically



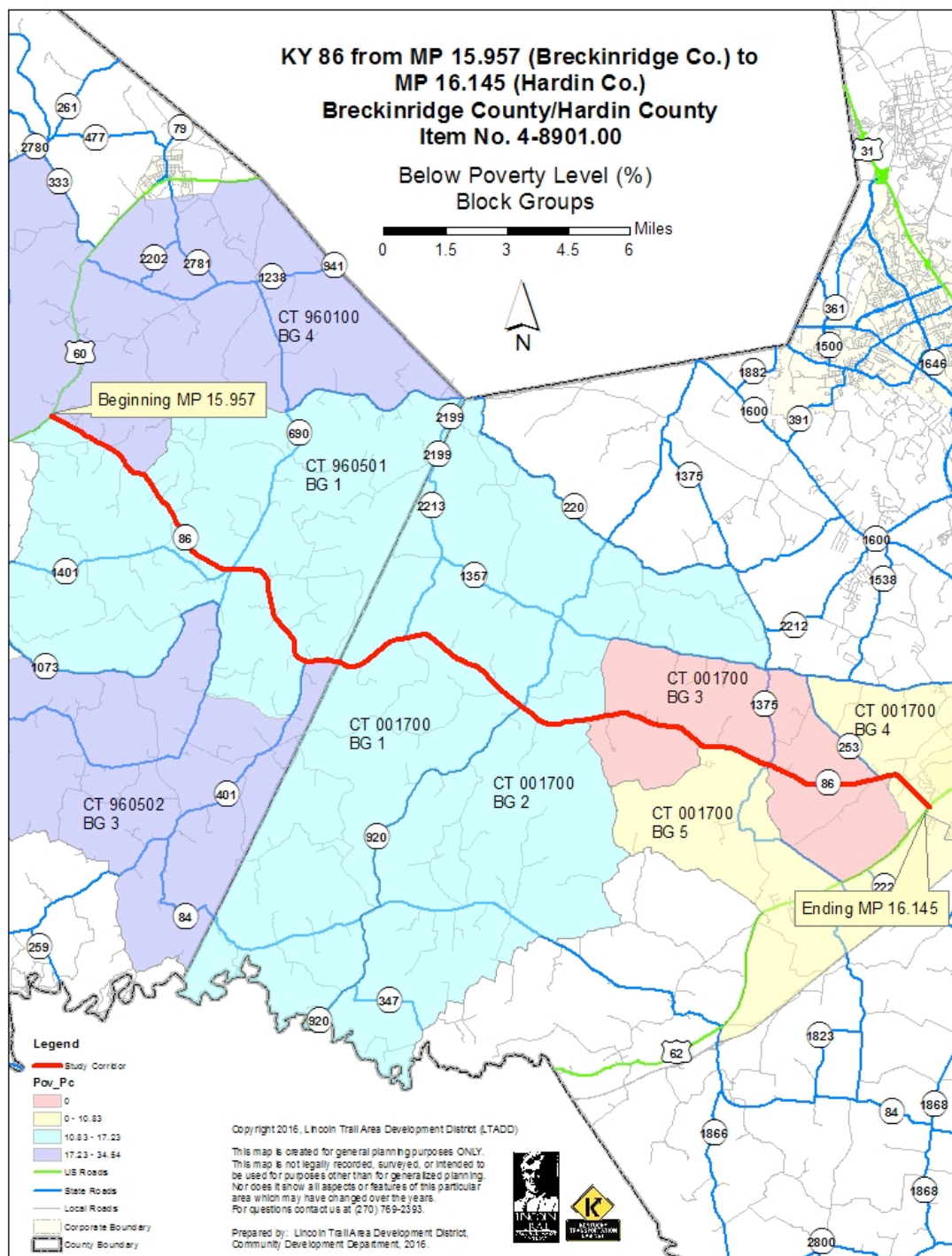
8.0 Study Findings / Population by Persons Below Poverty Level

As described in the 2013 American Community Survey of the U.S. Census Bureau data, the percentage of persons below the poverty level in the last 12 months in Kentucky is 18.8% and in Breckinridge County 19.00% – both well above the national level of 15.41%. However, Hardin County (15.00%) had a percentage of persons just below the poverty level in the last 12 months of both the National and the State levels.

As illustrated in Map 10.8 and the Census Data table in Appendix C, all block groups in Breckinridge County were either at or above the state percentage and all were above the national percentage. All block groups in Hardin County are below both the national and state percentages.



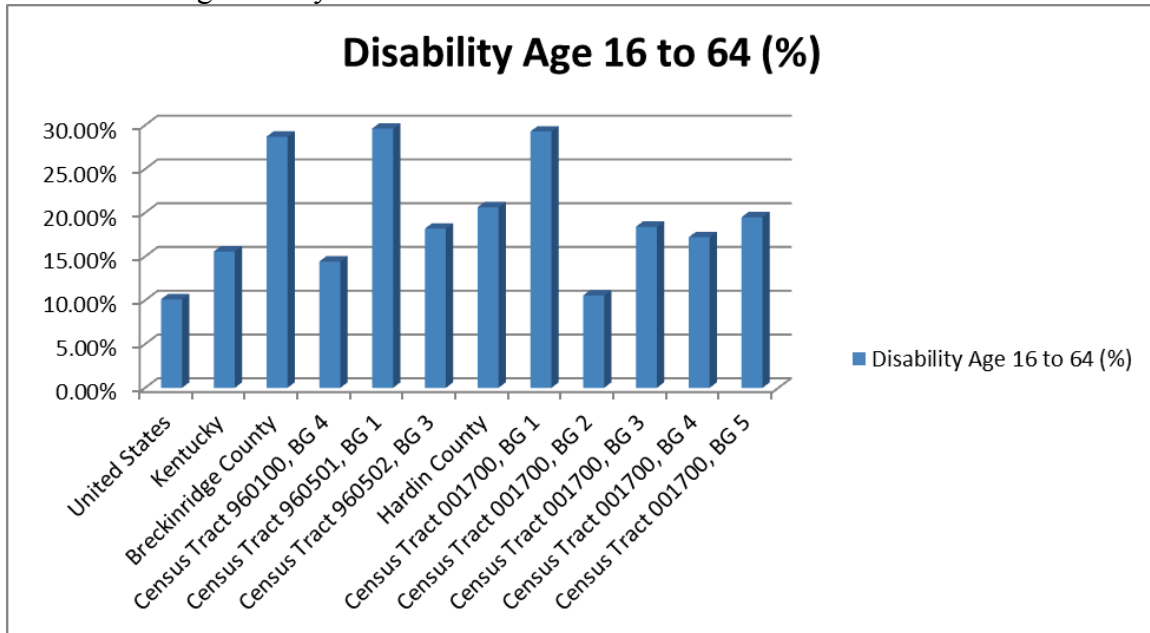
Map 8.1 below displays the concentration of persons below the poverty level geographically.



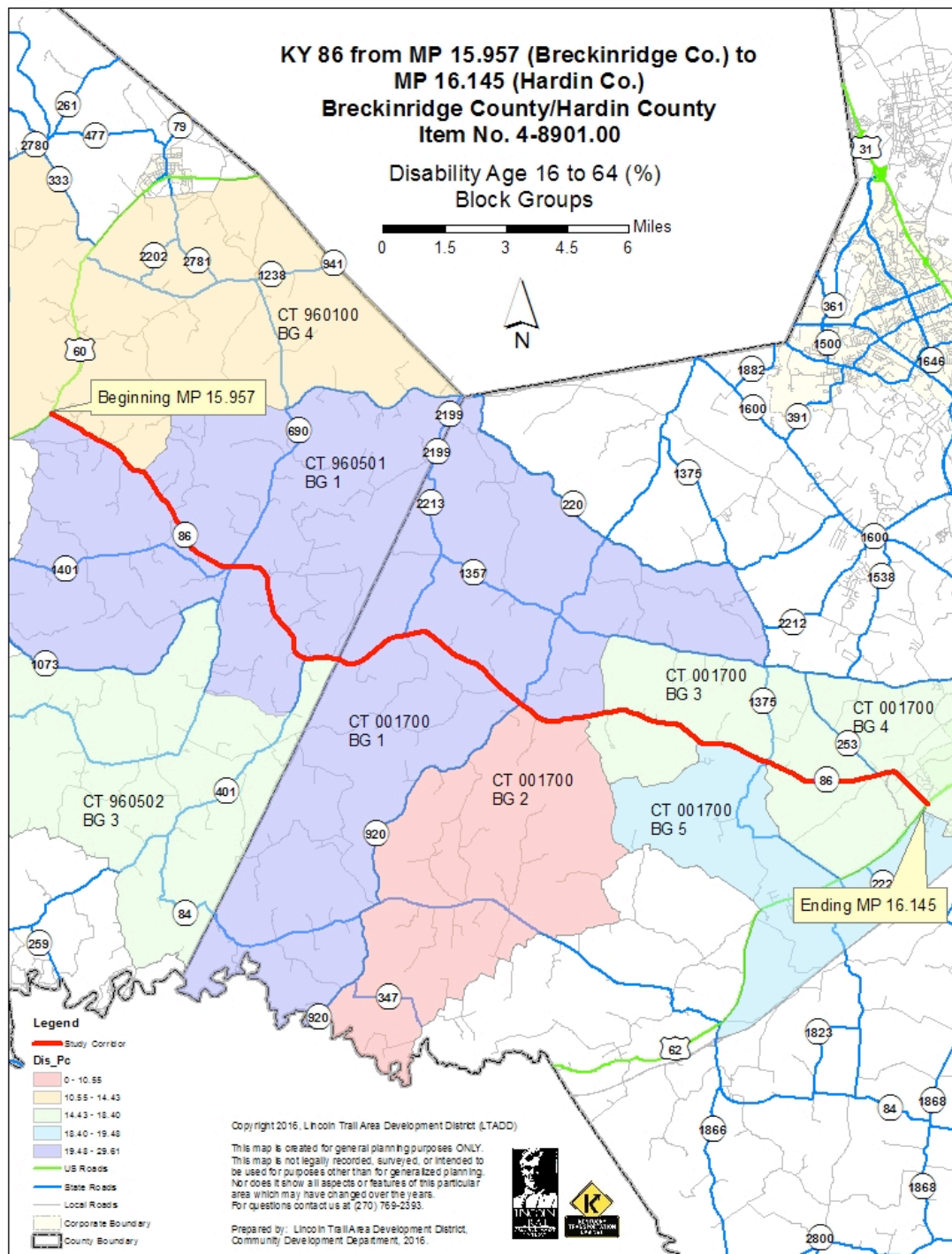
9.0 Study Findings / Population by Disability Age 16 to 64

After an analysis of the 2013 American Community Survey of the U.S. Census Bureau's data of the population by disability age 16 to 64, the following results were found. The

national average of disability (10.11%) was the lowest of all levels studied. The state level came in below the study area with the exception of two block groups (one in Hardin and one in Breckinridge) with a percentage at 15.57%. The county level for both Hardin County and Breckinridge County were both above the National and State levels at 20.63% and 28.69% respectively. The defined study area produced results all above both the national and state levels with the exception of one block group in both Hardin County and Breckinridge County.



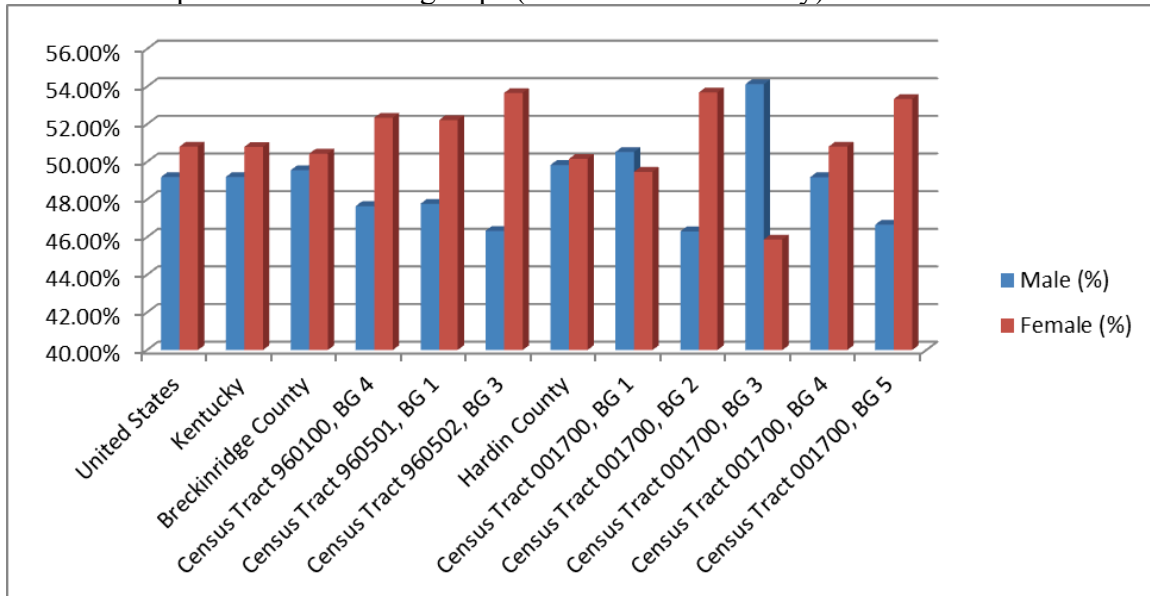
Map 9.1 displays the concentration of persons with a disability aged 16 to 64 geographically



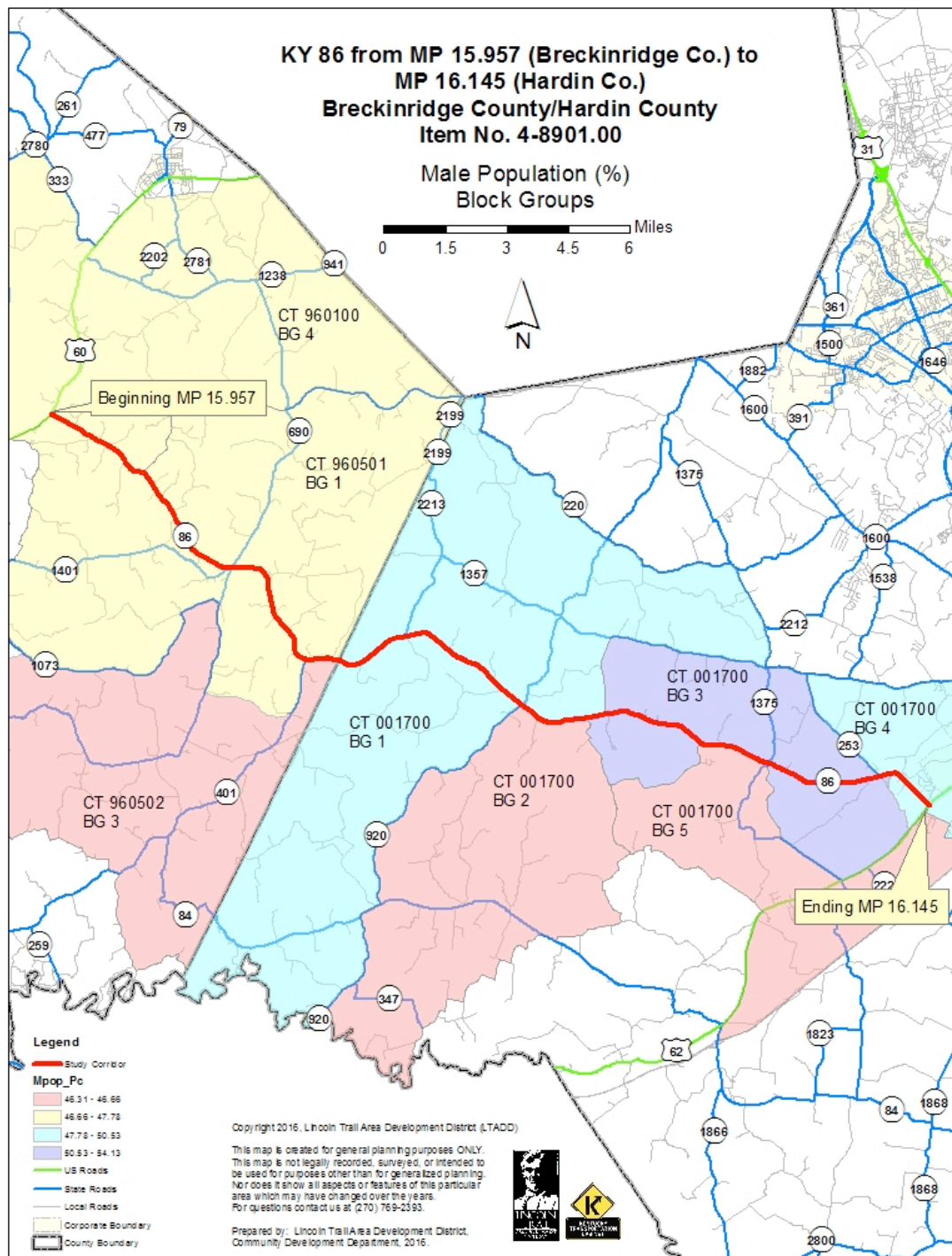
10.0 Study Findings / Population by Sex

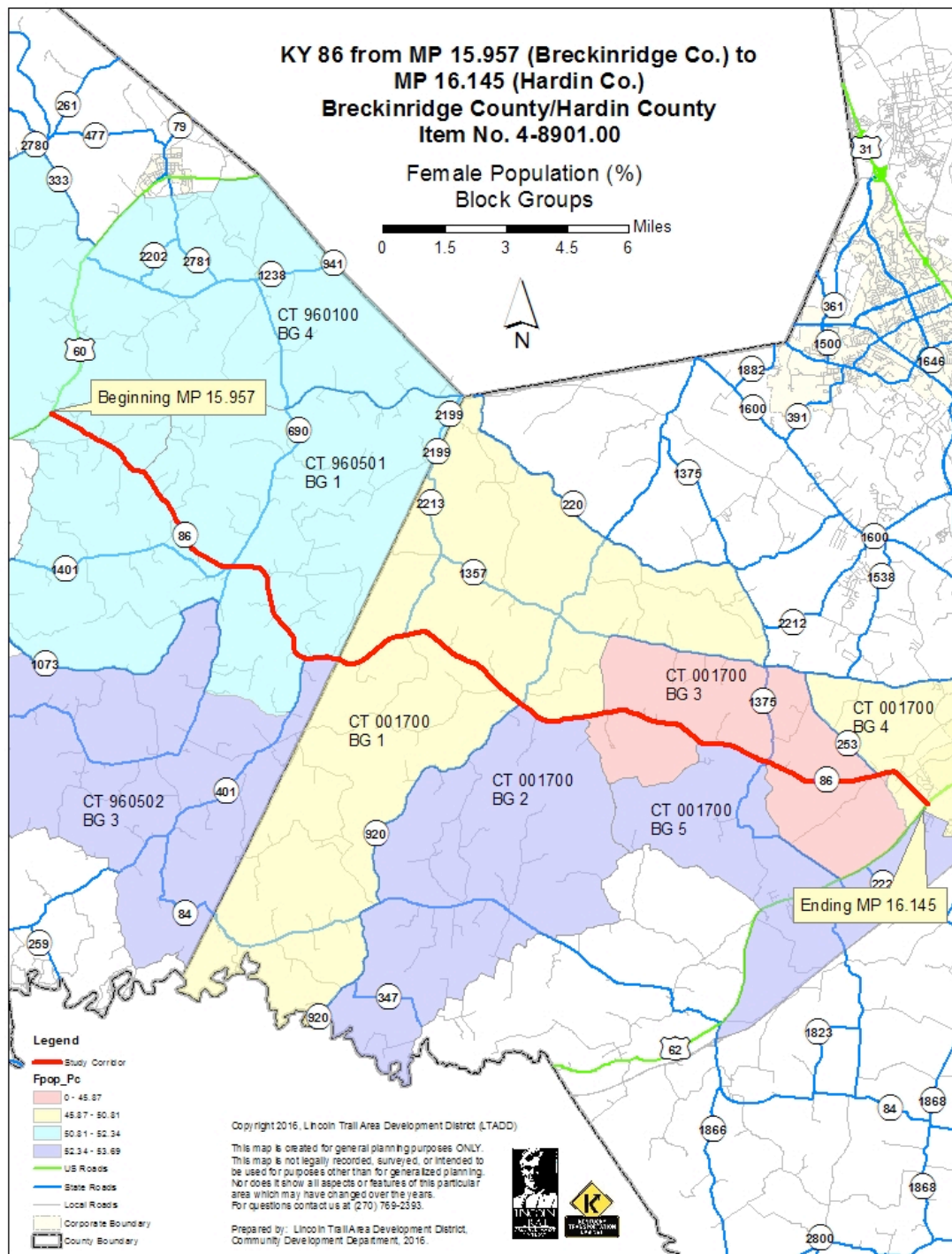
As the 2013 American Community Survey of the U.S. Census Bureau data points out, the distribution of population broken up by sex is fairly evenly distributed at the National

(49.19% male/50.81% female), State (49.20% male/50.80% female), and County (Breckinridge 49.56% male/50.44% female; Hardin 49.84% male/50.16% female) levels. The data at the census block group level slightly deviates from that fairly even distribution. All but two block groups have a higher percentage of females than males with the exception of two block groups (both in Hardin County).



Maps 10.1 and 10.2 below display the distribution of persons by sex geographically

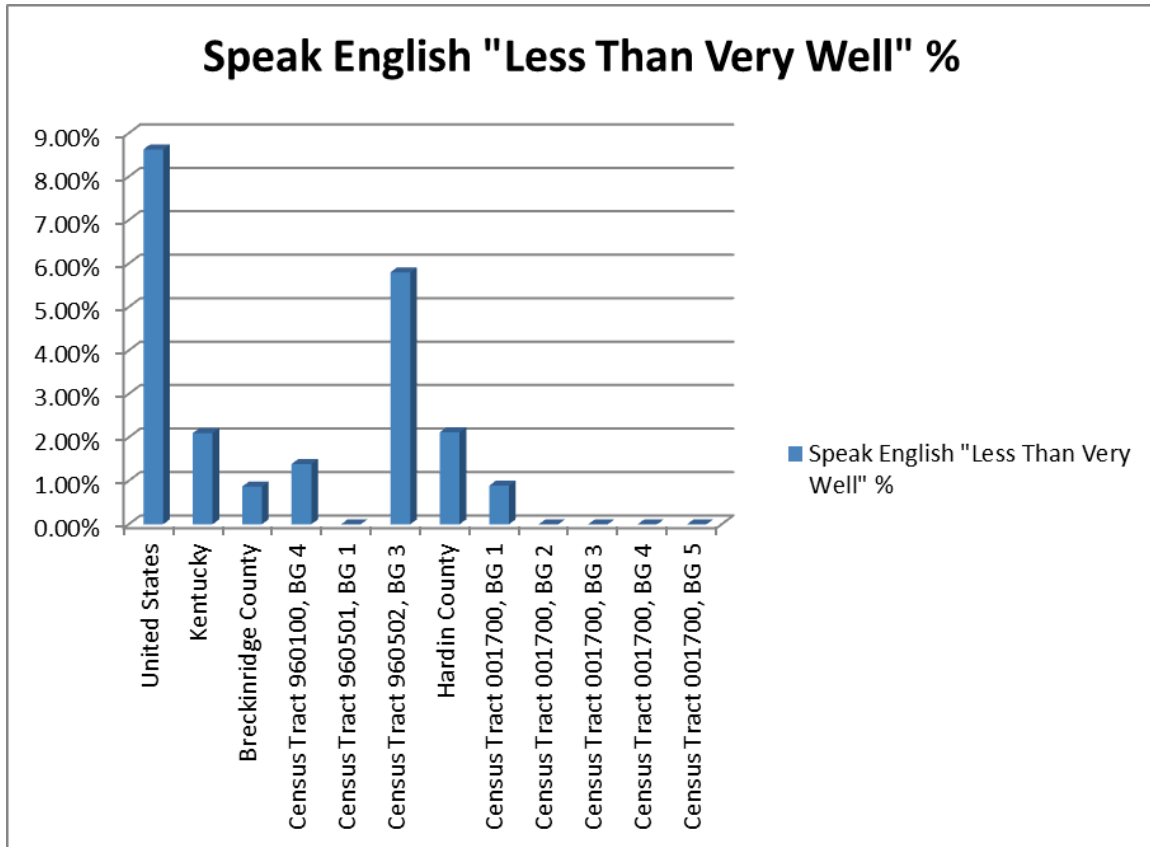




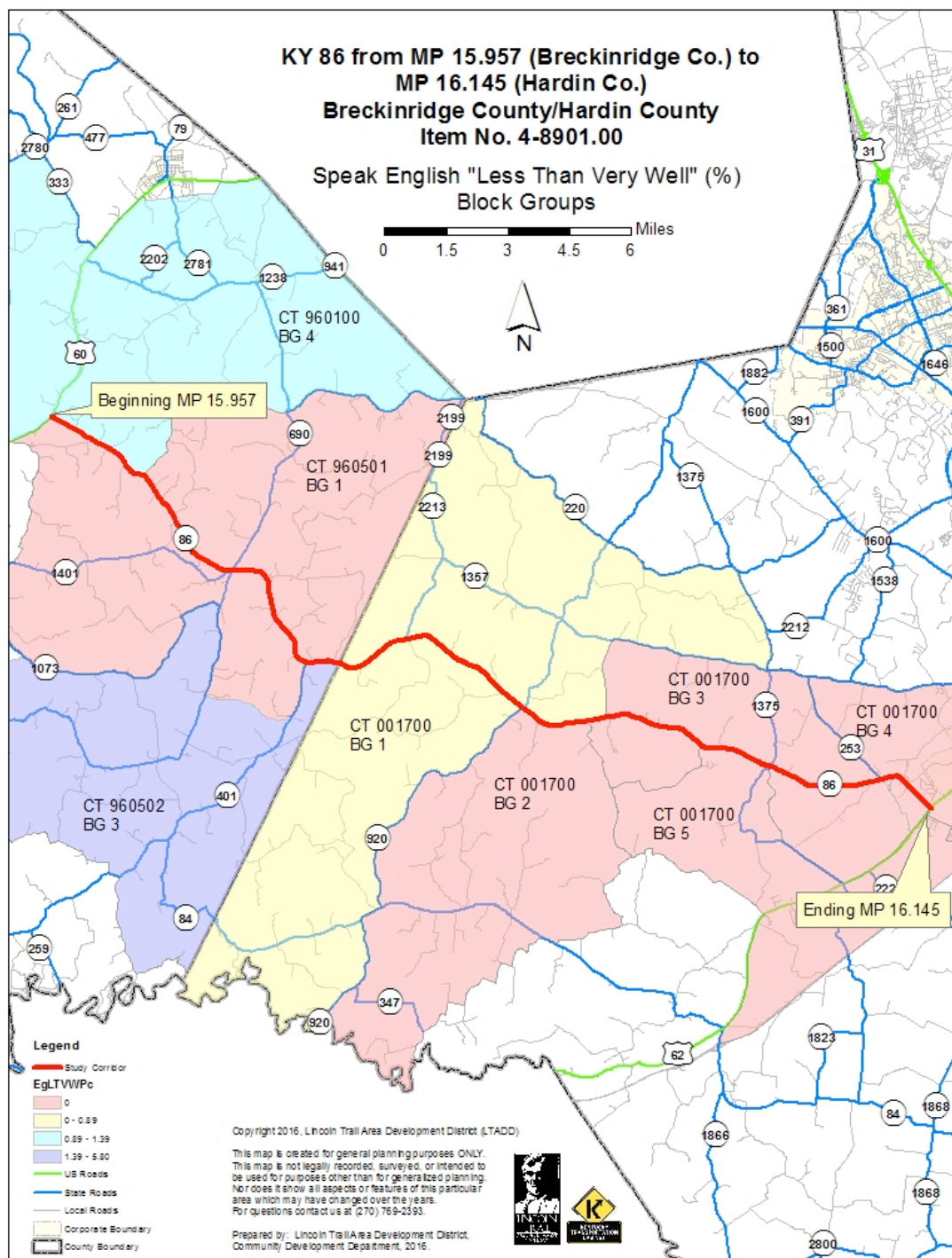
11.0 Study Findings / Population by English Proficiency

An analysis of the U.S. Census 2013 American Community Survey data shows that there is a discrepancy of rates of all persons who speak a primary language other than English that are 5 years of age or older nationally (8.63%) vs. state (2.10%) and county (0.87%)

for Breckinridge County and 2.12% for Hardin County). When examining the block groups in the study area, it is found that all block groups are below both the national and state levels with the exception of one block group in Breckinridge County above the state level only.



Map 10.1 below displays the concentration of persons aged 5+ who speak English "Not Well" geographically



12.0 Conclusion

After a comprehensive analysis of the KY 86 study area, all census block groups that comprise the study area had rates of minority, age, poverty, disabled, sex and English speaking comparable with national, state and county averages (with only a few exceptions that were noted in above in the report).

The methodologies used in this planning document are appropriate for identifying possible areas of concern in small urban areas and potential project corridors. However, during future phases of project development a more detailed and robust analysis would be required for the NEPA documentation when assessing the potential for adverse and disproportionate impacts to low-income and minority populations.

Appendix A: Planning Study Contact List

Honorable Maurice Lucas
Breckinridge Co. Judge Executive
PO Box 227
Hardinsburg, KY 40143
270.756.2269

Honorable Harry Berry
Hardin Co. Judge Executive
PO Box 568
150 Provident Way
Elizabethtown, KY 42702
270.765.2350

Mrs. Dana Bland
Breckinridge Co. PVA
PO Box 516
Hardinsburg, KY 40143
270.756.5154

Mr. Danny Hutcherson
Hardin Co. PVA
PO Box 227
150 Provident Way
Elizabethtown, KY 42702
270.765.2129

Mr. Ronnie Goodman
Hardin Co. Road Supervisor
502 Bacon Creek Rd.
Elizabethtown, KY 42701
270.737.6046

Mr. Steve Critchelow
Breckinridge Co. Road Supervisor
PO Box 227
Hardinsburg, KY 40143
270.756.5912

Mr. Doug Finlay
Emergency Management Director
1450 Rineyville Rd.
Elizabethtown, KY 42701
270.765.5978

Mr. Marty Moore
Emergency Management Director
PO Box 227
Hardinsburg, KY 40143
270.580.4766

Appendix B: Methodology

Methodology for Assessing Underserved Populations including Environmental Justice, Title VI, Age and Disability considerations in conjunction with KYTC Planning Studies

Cover Page

Title: Insert specific study type/area

Subtitle: Socioeconomic Study

Date:

Author:

Analysis

Environmental Justice (EJ) refers to the fair treatment of all people regardless of race, color, national origin or income. Specifically, agencies must demonstrate meaningful involvement with the above stated groups with respect to development, implementation and enforcement of environmental laws, regulations and policies. EJ analysis is undertaken for any study that may result in impacts on a minority and/or low income population that has a federal nexus (funding or approval).

Additionally KYTC works to identify potential populations of the Elderly, Disabled, Limited English Proficiency and Limited Transportation Options that may be impacted in or near the Affected Community (AC) should highway improvements take place in the future.

Examples of these studies include, but are not limited to:

- Corridor Studies
- Traffic Studies
- Small Urban Area Studies
- Feasibility Studies
- Interchange Justification Studies
- Interchange Modification Reports

(AC) with potential EJ impacts are determined by locating populations of minority, low-income, disabled or elderly and calculating their percentage in the area relative to a reference community of comparison (COC).

Communities of comparison:

- The county percentage
- Kentucky percentage
- Block groups within reasonable proximity of the study area

The demographics of the study area should be defined using block group data accessed via the American Community Survey 5 year data. KYTC will work in conjunction with the State Data Center to provide pertinent spatial data on a yearly basis for the following, as the update schedule allows:

- Minority
- Low-income
- Elderly
- Disabled populations
- Limited English Proficiency

Sample Analysis:

The percentage of persons living below the poverty level in Kentucky (18.60%) is significantly higher than that of the United States (14.90%). Poverty levels in Metcalfe County are slightly lower than that of the state with 16.10% of Metcalfe County residents living below the poverty level. CT 9601 has greater levels of poverty than does the county, state and U.S. with 17.90% of persons living below the poverty level. CT 9603 however has a lower level of poverty than Metcalfe County as a whole and the state, with 13.40% of residents living below the poverty.

****The following disclaimer should be included in the document in the Socioeconomic Study methodologies Section:****

The methodologies used in this planning document are appropriate for identifying possible areas of concern in small urban areas and potential project corridors. However, during future phases of project development a more detailed and robust analysis would be required for the NEPA documentation when assessing the potential for adverse and disproportionate impacts to low-income and minority populations.

A map or shapefile of the alternatives will be provided by the consultant or KYTC to the applicable Area Development District (ADD). KYTC, in conjunction with the consultant, will review the ADD data for quality and completeness. The consultant will summarize the information provided by the ADD in the final report. The full Socioeconomic analysis should be placed in an Appendix for reference as necessary.

Maps should be included with the analysis that depict the project area in relation to the Census tracts and block groups included in the analysis. Maps similar to **Figure 1** should be symbolized utilizing an appropriate range dependent on the relevant data being studied.

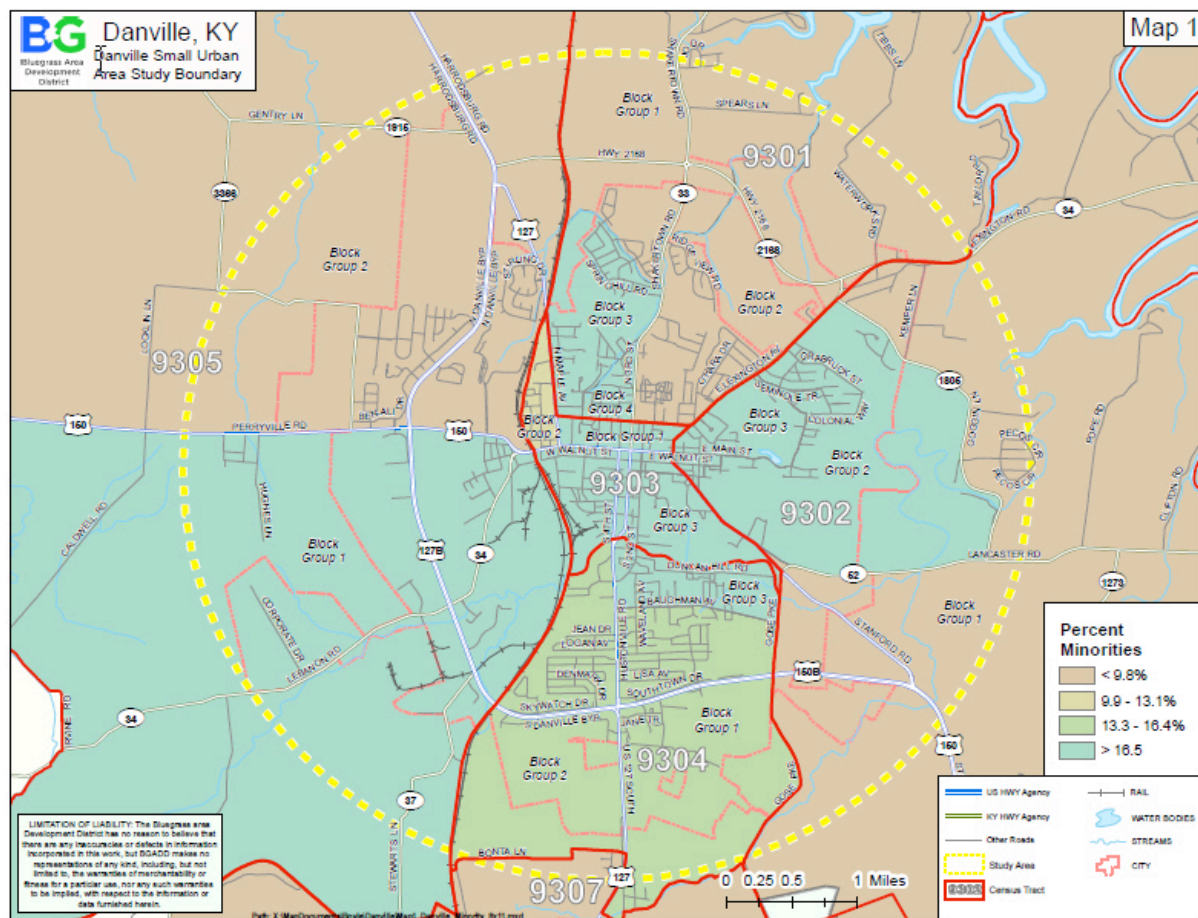


Figure 1

Additional Information

The below information may be beneficial to note for future reference

- Changes due to new residential developments in the area
- Increases in Asian and/or Hispanic populations.
- Concentrations or communities that share a common religious, cultural, ethnic, or other background, e.g., Amish communities.
- Communities or neighborhoods that exhibit a high degree of community cohesion or interaction and the ability to mobilize community actions at the start of community involvement.
- Concentrations of common employment, religious centers, and/or educational Institutions.

Tips:

- Only include data that is being analyzed. For instance there is no need to define Block Groups if they are not used. Similarly, Census Tracts should only be referenced as they relate to location of Block Groups discussed.
- Choropleth maps (shaded, color gradation) should be developed based on population percentage.
- 1 page summary facing the adjacent related map is a functional, readily relatable format.
- At this stage there is no proposed alignment, therefore we can make no assumptions regarding adverse impacts or mitigation efforts to any populations. We can only identify potential locations of Affected Communities.

Applicable Laws, Acts and Executive Orders

Civil Rights Act of 1964, Title VI (42 USC 2000d et seq.) -This title declares it to be the policy of the United States that discrimination on the grounds of race, color, or national origin shall not occur in connection with programs and activities receiving federal financial assistance, and authorizes and directs the appropriate federal departments and agencies to take action to carry out this policy. The Presidential Memorandum accompanying Executive Order 12898 states that in accordance with this title, each federal agency should ensure that all programs or activities receiving federal financial assistance that affect human health or the environment do not directly, or through contractual or other arrangements, use criteria, methods, or practices that discriminate on the basis of race, color, or national origin.

Age Discrimination Act of 1975 - 42 U.S.C. 6101, provides: No person in the United States shall, on the basis of age, be excluded from participation in, be denied the benefits of, or be subjected to discrimination under any program or activity receiving Federal financial assistance.

Rehabilitation Act of 1973, Section 504 - 42 U.S.C. 794, et seq., provides: No qualified handicapped person shall, solely by reason of his handicap, be excluded from participation in, be denied the benefits of, be subjected to discrimination under any program or activity that receives or benefits from Federal financial assistance.

Americans With Disabilities Act of 1990 - 42 U.S.C. 12131, et seq., provides: No qualified individual with a disability shall, by reason of such disability, be excluded from the participation in, be denied the benefits of, or be subjected to discrimination by a department, agency, special purpose district, or other instrumentality of a State or local government.

Executive Order #12898 - (Environmental Justice) directs federal agencies to develop strategies to address disproportionately high and adverse human health or environmental effects of their programs on minority and low-income populations.

Executive Order #13166 - (Limited-English-Proficiency) directs federal agencies to evaluate services provided and implement a system that ensures that Limited English Proficiency persons are able to meaningfully access the services provided consistent with and without unduly burdening the fundamental mission of each federal agency.

Appendix C: Census Data Tables

Statistics for Racial and Ethnic Minorities							
	Total	Total Minority	Minority (%)	Black or African American Alone	Black or African American Alone (%)	American Indian and Alaska Native Alone	American Indian and Alaska Native Alone (%)
United States	311,536,594	80,944,015	25.98	39,167,010	12.57	2,540,309	1.01
Kentucky	4,361,333	526,320	12.07	341,576	7.83	8,811	0.20
Breckinridge County	20,076	1,015	5.06	409	2.04	64	0.32%
Census Tract 960100, BG 4	2,300	154	6.70	-	0.00	-	0
Census Tract 960501, BG 1	1,574	58	3.68	-	0.00	-	0
Census Tract 960502, BG 3	928	11	1.19	-	0.00	-	0.00
Hardin County	107,565	25,021	23.26	12,275	11.41	541	0.50%
Census Tract 001700, BG 1	1,892	8	0.42	8	0.42%	-	0.00
Census Tract 001700, BG 2	1,056	6	0.57	-	0.00	-	0.00
Census Tract 001700, BG 3	933	10	1.07	-	0.00	-	0.00
Census Tract 001700, BG 4	2,031	123	6.06	123	6.06%	-	0.00
Census Tract 001700, BG 5	1,198	20	1.67	10	0.83%	-	0.00
	Total	Some Other Race Alone	Some Other Race Alone (%)	Two or More Races	Two or More Races (%)	Asian Alone	Asian Alone (%)
United States	311,536,594	14,746,054	4.73	8,732,333	2.80	15,231,962	4.89
Kentucky	4,361,333	41,980	1.01	80,523	1.85	51,411	1.28
Breckinridge County	20,076	86	0.43%	250	1.25%	42	0.21%
Census Tract 960100, BG 4	2,300	-	0.00	154	6.70%	-	0.00
Census Tract 960501, BG 1	1,574	-	0.00	-	0	-	0.00
Census Tract 960502, BG 3	928	-	0.00	11	1.20%	-	0
Hardin County	107,565	1,553	1.44%	3,745	3.48%	2,104	1.95%
Census Tract 001700, BG 1	1,892	-	0.00	-	0	-	0
Census Tract 001700, BG 2	1,056	-	0.00	-	0	6	0.57%
Census Tract 001700, BG 3	933	-	0.00	-	0	-	0
Census Tract 001700, BG 4	2,031	-	0.00	-	0	-	0
Census Tract 001700, BG 5	1,198	-	0.00	10	0.83%	-	0.00
	Total	Native Hawaiian and other Pacific Islander alone	Native Hawaiian and other Pacific Islander alone (%)	White Alone	White Alone (%)	Hispanic or Latino Origin*	Hispanic or Latino Origin (%)*
United States	311,536,594	526,347	0.17	230,592,579	74.02	51,786,591	16.62
Kentucky	4,361,333	2,019	0.0004	3,835,013	87.93	136,340	3.13
Breckinridge County	20,076	2	0.00	19,134	95.31	175	0.87%
Census Tract 960100, BG 4	2,300	-	0.00	2,146	93.30%	-	0.00%
Census Tract 960501, BG 1	1,574	-	0.00	1,516	96.32%	58	3.68%
Census Tract 960502, BG 3	928	-	0.00	917	98.81%	-	0.00%
Hardin County	107,565	354	0.33%	82,139	76.36	5,317	4.94%
Census Tract 001700, BG 1	1,892	-	0.00	1,884	99.58%	-	0.00%
Census Tract 001700, BG 2	1,056	-	0.00	1,050	99.43%	-	0.00%
Census Tract 001700, BG 3	933	-	0.00	923	98.93%	10	1.07%
Census Tract 001700, BG 4	2,031	-	0.00	1,908	93.94%	-	0.00%
Census Tract 001700, BG 5	1,198	-	0.00	1,178	98.33%	-	0.00%
Source: US Census Bureau, 2009-2013 American Community Survey							
Table: B03002							

Statistics for Age, Poverty, and Disabled Populations			
	Total	Persons 65 and Over	Persons 65 and Over (%)
United States	311,536,594	41,851,042	13.43%
Kentucky	4,361,333	597,875	13.71%
Breckinridge County	20,076	3,300	16.44%
Census Tract 960100, BG 4	2,300	131	5.70%
Census Tract 960501, BG 1	1,574	254	16.14%
Census Tract 960502, BG 3	928	92	9.91%
Hardin County	107,565	12,269	11.41%
Census Tract 001700, BG 1	1,892	310	16.38%
Census Tract 001700, BG 2	1,056	29	2.75%
Census Tract 001700, BG 3	933	159	17.04%
Census Tract 001700, BG 4	2,031	263	12.95%
Census Tract 001700, BG 5	1,198	72	6.01%
Source: US Census Bureau, 2009-2013 American Community Survey			
Table: B01001			
	Total Population Age 16 to 64	Disability Age 16 to 64	Disability Age 16 to 64 (%)
United States	192,168,613	19,403,946	10.11%
Kentucky	2,680,541	417,332	15.57%
Breckinridge County	12,912	3,704	28.69%
Census Tract 960100, BG 4	1,580	228	14.43%
Census Tract 960501, BG 1	1,219	361	29.61%
Census Tract 960502, BG 3	462	84	18.18%
Hardin County	71,063	14,661	20.63%
Census Tract 001700, BG 1	1,472	431	29.28%
Census Tract 001700, BG 2	749	79	10.55%
Census Tract 001700, BG 3	739	136	18.40%
Census Tract 001700, BG 4	1,459	251	17.20%
Census Tract 001700, BG 5	893	174	19.48%
Source: US Census Bureau, 2009-2013 American Community Survey			
Table: C23023			
	Total	Population Below Poverty Level (Last 12 Months)	Population Below Poverty Level (Last 12 Months) (%)
United States	311,536,594	47,976,635	15.4%
Kentucky	4,361,333	819,930	18.8%
Breckinridge County	20,076	3,814	19.00%
Census Tract 960100, BG 4	2,300	579	25.19%
Census Tract 960501, BG 1	1,574	271	17.23%
Census Tract 960502, BG 3	928	321	34.54%
Hardin County	107,565	16,135	15.00%
Census Tract 001700, BG 1	1,892	253	13.37%
Census Tract 001700, BG 2	1,056	157	14.87%
Census Tract 001700, BG 3	933	-	0.00%
Census Tract 001700, BG 4	2,031	220	10.83%
Census Tract 001700, BG 5	1,198	114	9.52%
Source: US Census Bureau, 2009-2013 American Community Survey			
Table: B17021			

Statistics for Sex, English Proficiency					
	Total	Male Population	Male Population (%)	Female Population	Female Population (%)
United States	311,536,594	153,247,412	49.19%	158,289,182	50.81%
Kentucky	4,361,333	2,145,986	49.20%	2,215,347	50.80%
Breckinridge County	20,076	9,950	49.56%	10,126	50.44%
Census Tract 960100, BG 4	2,300	1,096	47.65%	1,204	52.35%
Census Tract 960501, BG 1	1,574	752	47.78%	822	52.22%
Census Tract 960502, BG 3	928	430	46.34%	498	53.66%
Hardin County	107,565	53,607	49.84%	53,958	50.16%
Census Tract 001700, BG 1	1,892	956	50.53%	936	49.47%
Census Tract 001700, BG 2	1,056	489	46.31%	567	53.69%
Census Tract 001700, BG 3	933	505	54.13%	428	45.87%
Census Tract 001700, BG 4	2,031	999	49.19%	1,032	50.81%
Census Tract 001700, BG 5	1,198	559	46.66%	639	53.34%
Source: US Census Bureau, 2009-2013 American Community Survey					
Table: B01001					
	Total Population 5+	Speak English 'Less Than Very Well' (Age 5+)	Speak English 'Less Than Very Well' (Age 5+) (%)		
United States	291,484,482	25,148,900	8.63%		
Kentucky	4,082,467	85,829	2.10%		
Breckinridge County	18,838	163	0.87%		
Census Tract 960100, BG 4	2,230	31	1.39%		
Census Tract 960501, BG 1	1,392	-	0%		
Census Tract 960502, BG 3	759	44	5.80%		
Hardin County	97,533	2,065	2.12%		
Census Tract 001700, BG 1	1,798	16	0.89%		
Census Tract 001700, BG 2	912	-	0%		
Census Tract 001700, BG 3	802	-	0%		
Census Tract 001700, BG 4	1,906	-	0%		
Census Tract 001700, BG 5	1,102	-	0%		
Source: US Census Bureau, 2009-2013 American Community Survey					
Table: B16004					